

: workflow

Accelerated generation of CNC code

Edgecam Workflow, the market leading software application is specifically designed for manufacturers to reduce costs, improve quality and achieve shorter lead times. Workflow understands the component topology and understands the required manufacturing environment therefore accelerating toolpath generation

Workflow will have a significant impact on shortening programming time, and because it is so simple to operate, the learning curve for new users is considerably reduced.

Loading and positioning the component

Now fully automatic. In many CAM systems the user has to manually set the environment and use traditional commands to create a datum.

Manufacturing method and suitable machine tools

The user is presented with a list of suitable machine tools based on the component's geometry, ensuring machine limits are respected.

Adding user-defined stock, or stock from a database

Based on the components dimensions, a selection of defined stock materials are listed which allows a suitable stock to be easily applied.

Importing fixtures

User defined fixtures, including vices, chuck and clamps can be applied using the fixture manager

Managing strategies to aid manufacture

Edgecam engineers have derived suggested methods of manufacture to machine the part on a feature-by-feature basis, with logical cutters path.

These processes are used as 'toolpath accelerators' allowing users, if required to add additional inputs to produce the exact toolpath required for their processes. However, it is also possible with the addition of Edgecam Strategy Manager module the user can update the manufacturing Strategies to match the companies' manufacturing processes, so that all manual intervention is removed.

Workflow - A Five Stage Process

File: Adopting the common Microsoft Office 2010 theme, this allows users to efficiently manage files and folders.

Set-Up: Dynamically sets up datum position, adds stock and fixtures through the interactive stock, fixture and machine manager functions.

Features: Using Edgecam's powerful automatic feature recognition, all types of manufacturing features can be found.

Machining: The Planning board applies a suggested order of manufacture, which can be manipulated easily by drag and drop techniques.

NC Code: The toolpath is then simulated in the machine simulator, checking for collisions, gauges and limit over travel. The toolkit can be reviewed and edited before NC code is generated to complete the five-stage Workflow process.

Interactive, intuitive and Informative

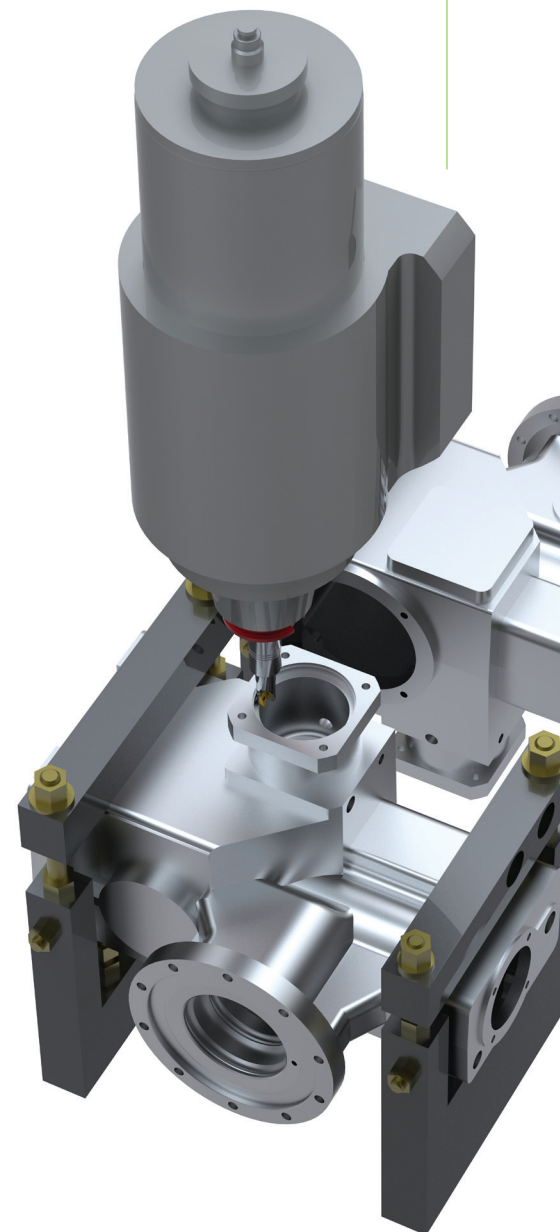
Inbuilt machining strategies automatically create cutter paths

User defined cutter path creation

Ribbon bar interface

Product launcher

User navigation and user guidance



: strategy manager

True Knowledge Based Machining

Edgecam Strategy Manager encompasses the best from the principles of rules, knowledge and feature based machining and utilizes these to produce a fast, reliable and highly automated solution for solids machining

Automate any Edgecam machining application and reduce your programming time to seconds with Edgecam Strategy Manager.

At the core of Edgecam Strategy Manager is an easy to use, graphical flow charting tool for building flexible strategies for machining solid models. Edgecam Strategy Manager does not impose rules or working methods, instead it allows you to utilize the knowledge of your top programmers with every part you need to machine. The process is entirely graphical and no knowledge of high level programming languages is required.

Reduce Programming Time :

Edgecam Strategy Manager captures your manufacturing knowledge in a simple flow chart format to define rules governing how a part will be machined. With a few simple steps you can reduce programming time, and create consistent repeatable G code.

Reduce Programming Time :

Reads native files from major CAD software without translation

- No translation means 100% data integrity every time
- Best-in-class feature recognition
- Part-to-toolpath associativity, eliminating rework after design changes

Benefits include :

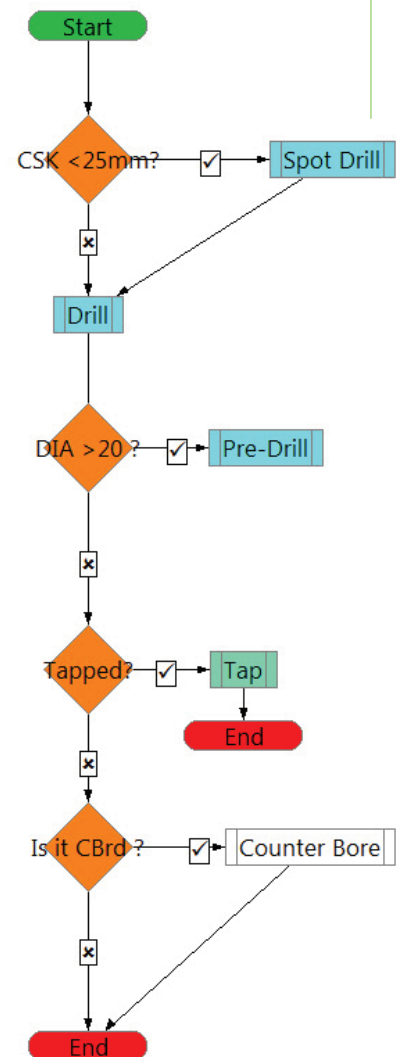
- Reduce time to market and lower costs
- Capture design and manufacturing intent
- Apply your proven manufacturing process
- Reduce programming time
- Eliminate programming errors
- Increase repeatability and traceability
- Easy to implement
- Edit free G-Code straight to your machine

Extends the feature based approach of Edgecam

Produces machining strategies tailored to your own best practices

Reads native files from major CAD software without translation

Best-in-class feature recognition



Vero Software Limited

45 Boulton Road
Reading
Berkshire
RG2 0NH
United Kingdom

tel. +44 (0) 118 922 6633
email. info@edgecam.com
web. www.edgecam.com