

# cabinet vision

## + Add-On Products

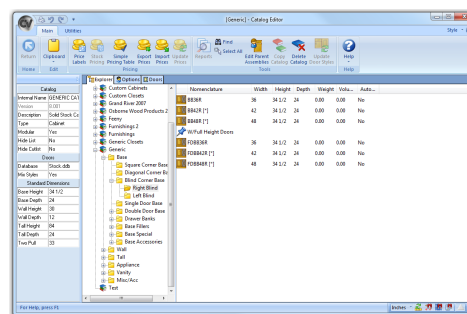
Custom functionality for your custom shop.

**Power up your software.**

### Catalog Editor

The Catalog Editor add-on allows Cabinet Vision Solid users to create their own modular catalog. Modular catalogs have pre-set options and option up-charges, door styles and door/drawer up-charges that match those included in a typical stock manufacturer's paper catalog.

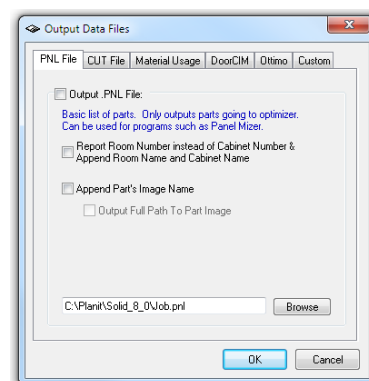
These catalogs incorporate all customized system standards from Cabinet Vision Solid, including materials, material schedules, doors and drawers, profiles, construction methods, and parts pricing (if applicable) into a new, distributable catalog. Distributable (or read only) Catalogs protect your Catalog data so that units cannot be modified and saved back into the catalog after it is distributed to end-users.



### Conversion Utility

Does your NC Panel Saw have its own Optimization software? Do you already have Panel Optimization software and just need to get your cut list from Solid into it? Do you have an MRP/ERP System that you would like to get Material usage reports into? If you answered yes to any of these questions then the Conversion Utility add-on is for you. The Conversion Utility outputs several standard files for use with 3rd party applications. The following information can be output:

- PNL File (Generic cut-list file in CSV format)
- CUT File (Used by Cutrite™, Tigerstop™, and other optimization applications)
- MatSum.MDB (Material Summary in Microsoft™ Access™)
- PRN File (For DoorCIM™)
- MLC File (For Ottimo™)
- Or create your own Custom Comma Separated Text file output



*\* Requires Solid Standard or higher*

# cabinet vision

## + Add-On Products

Custom functionality for your custom shop.

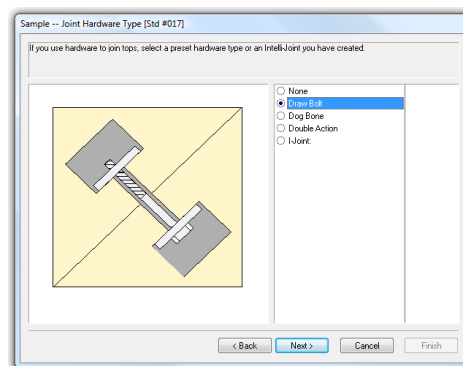
**Power up your software.**

### Counter Top Machining

Need to machine Draw-Bolts for your Counter Top Joints? This add-on allows you to easily configure the type of Joinery machining to perform at your Counter Top Joints. This add-on also allows you to specify Alignment Boring and other machining on your Counter Tops.

*\* Can only be added to Solid Advanced + Counter Top Wizard + S2M Center Advanced.*

*\* Standard feature of Solid Ultimate Screen to Machine.*

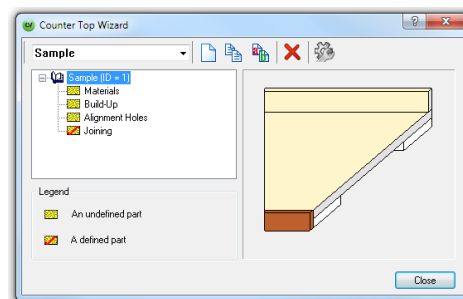


### Counter Top Wizard

Need to produce engineering and cut list information for your Counter Tops? This is the add-on for you. The Counter Top Wizard add-on is fully integrated with Cabinet Vision Solid allowing you to configure your Counter Top construction in an easy to use Wizard interface.

*\* Can only be added to Solid Advanced.*

*\* Included with Solid Ultimate.*

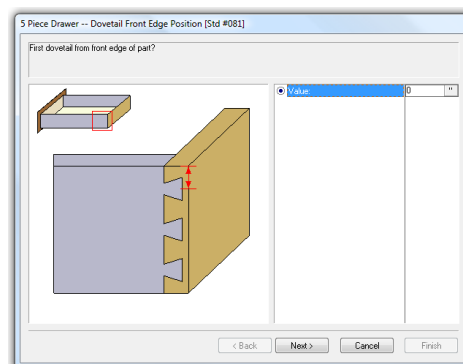


### Dovetails

Want to offer high-end features to your Clients? Dovetails are an excellent capability to add to your repertoire. With the Dovetails add-on you can define CNC Dovetails “your way” right inside the Solid Drawer Wizard and then machine them on your CNC router.

*\* Requires the S2M Center with CNC Output*

*\* Standard feature of Solid Ultimate Screen to Machine*



# cabinet vision

## + Add-On Products

Custom functionality for your custom shop.

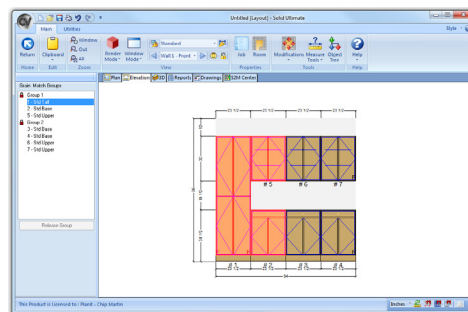
**Power up your software.**

### Grain Matching

Need Grain Match capability? No problem! This add-on, which is fully integrated into Solid, allows you to Grain Match both Vertical and Horizontal Grain for one Cabinet or a Group of Cabinets. Do you need to match AWI Premium Grade Standards? This is the add-on that allows you to easily achieve it!

*\* Requires the Panel Optimizer (non-NC or NC) Add-On*

*\* Standard feature of Solid Ultimate Screen to Machine*



### Jobsite Companion

Jobsite Companion is a software tool that runs on a Windows Mobile™ device and enables the cabinetmaker to input room and cabinet dimensions, take notes, mark electrical locations, attach digital photographs and feed this information directly into Cabinet Vision Solid.

**For a free trial or to purchase, visit [www.jobsite.planit.com](http://www.jobsite.planit.com)**



#### Hit the wall

Accurately size walls to actual field conditions and never worry about cabinets not fitting correctly during installation.



#### Make your mark

Accurately place all plumbing and electrical location markers to assist in your final design.



#### Be heard

Have an idea you don't want to forget? Simply attach a voice recording that can be reviewed later at your shop.



#### Worth 1000 words

Snap photos and attach them to your job. You won't have to revisit the job site until the installation.



#### Jot it down

Audio and photo notes not enough? Add text notes to your job and ensure that no minor detail is overlooked.



#### Go back and forth

2 way communication between Jobsite Companion and your Cabinet Vision Solid manufacturing system lets you verify your designs.

# cabinet vision

## + Add-On Products

Custom functionality for your custom shop.

**Power up your software.**

### Label-IT

Label-IT™ technology enables the Saw/CNC Operator to clearly visualize the panel as the labels are printed “on-demand” and placed on the parts. This labeling system is ideal for Nested-based manufacturing as well as traditional manual and NC panel saws.

Parts can be easily selected by simply touching the screen. Labels are printed instantly, and the screen is updated automatically to show exactly which parts and panels have been completed. Easy to read graphic labels are printed for each part.

With full Label design capabilities you have complete control over what data is presented on the Label. In conjunction with the S2M Center you can easily add bar-codes for each part that requires secondary machining (such as with Point-To-Point or CNC Drill and Dowel machines) for easy flow from one process to the next.



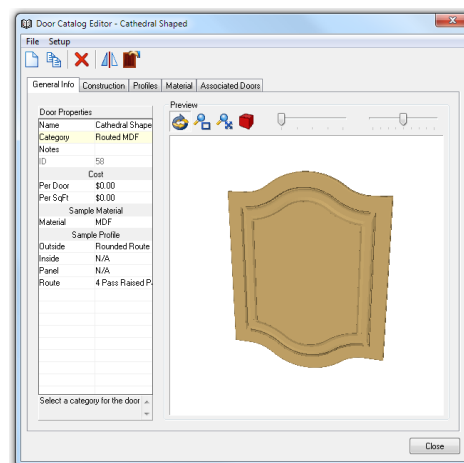
*\* Requires the Panel Optimizer (non-NC or NC) Add-On*

### MDF Door Maker

MDF Door Maker allows you to custom create and output multiple tooling instructions for virtually any MDF door style to the S2M Center. Complete CNC instructions for machining the doors are created automatically from your design.

*\* Requires the S2M Center with CNC Output*

*\* Standard feature of Solid Ultimate Screen to Machine*



# cabinet vision

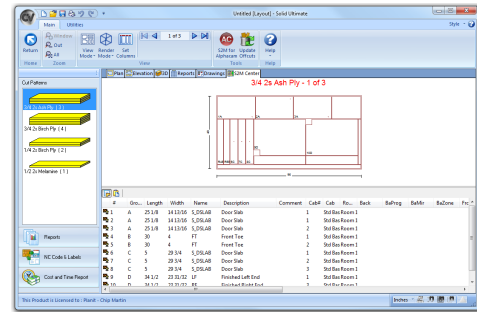
## + Add-On Products

Custom functionality for your custom shop.

**Power up your software.**

### Panel Optimizer (non-NC or NC version available)

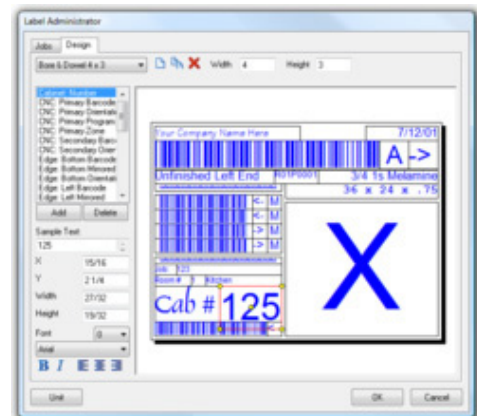
The Panel Optimizer allows you to maximize your material yield and reduce your waste. Fully integrated with Solid it allows you to quickly and easily convert your cut lists into patterns for import directly to your NC Panel saw or printed patterns you give directly to your manual sawyer. With built-in Offcut Management the system will instruct your sawyer which Offcuts to utilize from job to job maximizing material utilization. The Panel Optimizer also includes built-in links to nearly all NC Saws on the market.



\* Available for Solid Standard, Solid Advanced, and Solid Ultimate

### Real-Time Label Image

Many newer generation NC Saws include their own on-board “real-time” labeling solutions. The Real-Time Label Image add-on will allow you to design your part labels inside Solid with all of the available information you need to communicate; including an image of the part. These “labels” are then converted to image files which can be printed in “real-time” utilizing your Saw’s built-in Labeling system.



\* Requires the NC Panel Optimizer Add-On

# cabinet vision

## + Add-On Products

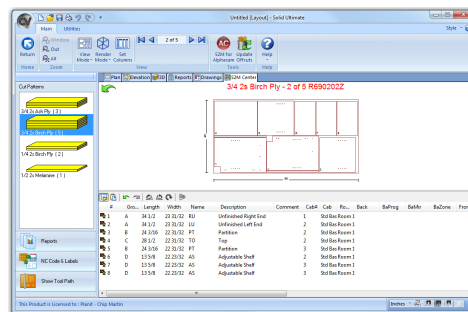
Custom functionality for your custom shop.

**Power up your software.**

### Screen to Machine™

We offer the industry's only fully integrated software solution for Screen-to-Machine™. Our technology generates the machine ready code for your products as they are designed. This intelligent machining saves enormous machine "programming" time when compared to older manual systems. Planit's Convergence Technology™ feature allows for sorting of parts per machine and per batch. This feature enables control over which parts are released to a particular machine and on what time sequence.

See the Screen to Machine information sheet or visit [www.screentomachine.com](http://www.screentomachine.com) to learn more about this powerful core add-on for Cabinet Vision Solid.



### Photovision

Cabinet Vision first released Photovision software in 1989. As the innovator of this technology, we have continually set the standard for photo quality renderings within the woodworking industry. Photovision's Sketch and Artistic Rendering is our latest innovation giving you multiple choices for artistic style renderings.

With Photovision, you can create photo-realistic presentation prints in minutes using the latest computer technology. Change floors, wall coverings, counter tops, wood species, stain colors, and more in seconds to assist your customer in designing their dream layout.

Change lighting and surface texture to illustrate shadows and reflections. Scan floor coverings, wallpaper samples, and countertops to show your customers exactly what their room will look like once complete.

Photovision is based on the latest Microsoft Windows technology, allowing your designs to be integrated with other software applications.



\* Photovision comes standard for new customers starting as of April 1, 2010