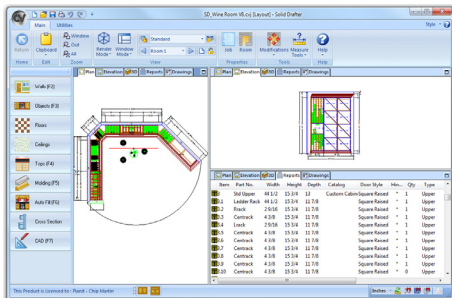
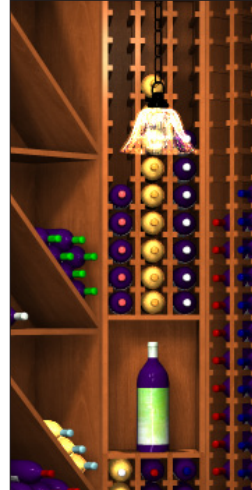


## : solid drafter

### Key Features

- Multiple Design Views Available (Plan, Elevation, 3D, Rendered, etc.)
- Straight, Angled, Curved, Peninsula, T-Walls, Cathedral, and Vaulted Walls
- Place Objects on the Back of Walls
- User Defined Custom Product Catalogs
- Full Cabinet Sectioning Control
- Advanced 2D CAD Capability
- Define Custom Molding Profiles
- Plan and Elevation Cross Sections
- Auto-Fill Walls and Rooms with Cabinets
- Section Drawer Boxes



Solid Drafter was designed as a drafting and estimating tool to be used in conjunction with your current Solid manufacturing solution. Do you have staff draftsman and you need a tool to get your shop drawings ready for review? Do you have staff estimators and you need a tool to get your estimates submitted? Solid Drafter is the solution you need. Solid Drafter has all of the presentation and estimating power of the Solid Advanced solution without the overhead (and product cost) of features only needed by your engineers getting product onto the shop floor.



Solid Drafter is a drafting and estimating tool that allows you to detail all your jobs, from kitchen cabinets to complex architectural projects. Solid Drafter automatically generates your shop drawings, 3D renderings, and estimating data. Graphically lay out your job to quickly create your shop drawings or use the built in Order Entry function to get a quick estimate.

Easy to navigate ribbonbars make locating items effortless. Split-screen designing provides floor plan, elevation and perspective views that can be displayed all on one screen. Build a 'Favorites' menu from the items used most often, saving time spent searching through the library. Automatically fill a plan with cabinets, molding, and countertops at the push of a button.

### Drafting products are perfect for:

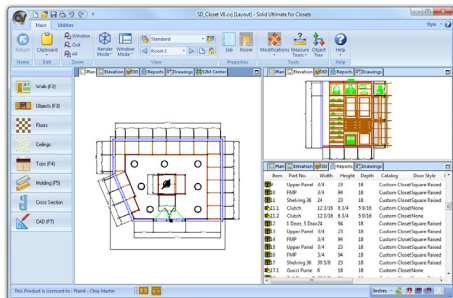
- Your Staff Draftsmen
- Your Estimators
- Your Showrooms

Ultimate	Module	Solid Drafter
Advanced	Target shop	Current Cabinet Vision customer
Standard	S2M Capable	No
Essential	Info	<a href="http://cabinetvision.com/soliddrafter">cabinetvision.com/soliddrafter</a>

## : solid drafter for Closets

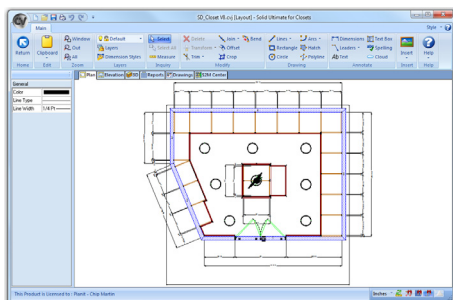
### Key Features

- Multiple Design Views Available (Plan, Elevation, 3D, Rendered, etc.)
- Straight, Angled, Curved, Peninsula, T-Walls, Cathedral, and Vaulted Walls
- Place Objects on the Back of Walls
- User Defined Custom Product Catalogs
- Hanging Section and Shoe Cubby Definition
  - Angled Shoe Shelf Definition
  - Wire Baskets Definition
- Advanced 2D CAD Capability
- Define Custom Molding Profiles
- Plan and Elevation Cross Sections



Solid Drafter for Closets was designed as a drafting and estimating tool to be used in conjunction with your current Solid for Closets manufacturing solution. Do you have staff draftsman and you need a tool to get your shop drawings ready for review? Do you have staff estimators and you need a tool to get your estimates submitted?

Solid Drafter is the solution you need. Solid Drafter has all of the presentation and estimating power of the Solid Advanced for Closets solution without the overhead (and product cost) of features only needed by your engineers getting product onto the shop floor.



Easy to navigate ribbonbars make locating items effortless. Split-screen designing provides floor plan, elevation and perspective views that can be displayed all on one screen. Build a 'Favorites' menu from the items used most often, saving time spent searching through the library.

### Drafting products are perfect for:

- Your Staff Draftsmen
- Your Estimators
- Your Showrooms

Ultimate	Module	Solid Drafter for Closets
Advanced	Target shop	Current Cabinet Vision customer
Standard	S2M Capable	No
Essential	Info	<a href="http://cabinetvision.com/soliddrafterforclosets">cabinetvision.com/soliddrafterforclosets</a>