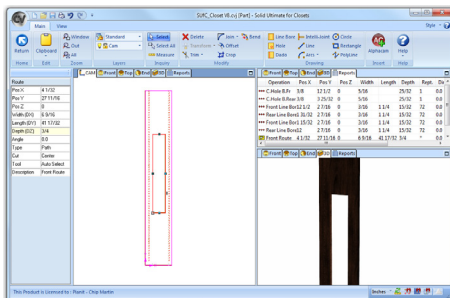
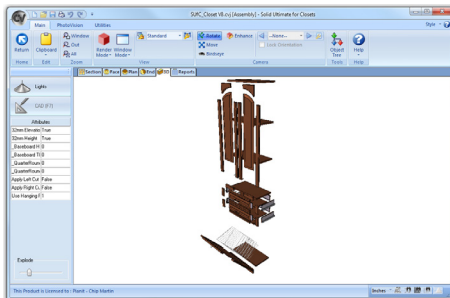


: solid ultimate for Closets



Top Reasons to Upgrade from Solid Advanced for Closets

- Full Part Control
- Exploded Assembly Views
- Ability to Use Custom Reports (Crystal Reports Required to Create them)
- Define Part and Assembly Labor
- Counter Top Construction Definition
- User Defined Intelli-Joints™
- Labor Reports / Job Costing
- Ability to Add-On Screen to Machine™ Center Ultimate
- Counter Top Machining (with Screen to Machine™ Center Ultimate)
- Grain Matching (with Screen to Machine™ Center Ultimate)



Solid Ultimate for Closets is the ultimate solution for any sized closet shop from the smallest to the largest. Solid Ultimate for Closets gives you a complete set of tools to engineer “your” product exactly as you need it.

Design and detail all your jobs using advanced solid modeling technology. Solid Ultimate for Closets automatically generates your shop drawings, 3D customer renderings, cutting lists, material requirements and estimating. Graphically layout your job or use the built-in Order Entry function to quickly create your cutting list or estimates.

Solid Ultimate for Closets enables any closet manufacturer to fully automate and integrate its design through manufacturing processes, saving time, eliminating costly mistakes and increasing productivity.

All Casegood and Closet products include:

- Drawing Capabilities
- 3D Rendering
- Cutlists and Reports
- Pricing and Bidding

Ultimate	Module	Solid Ultimate for Closets
Advanced	Target shop	Any shop needing complete customization
Standard	S2M Capable	Yes
Essential	Info	cabinetvision.com/solidultimateforclosets